

MONTHLY MEMBERSHIP PROGRESS REPORT

LOCATION MICHIGAN

District 11 D1

Results as of: 6/30/2023

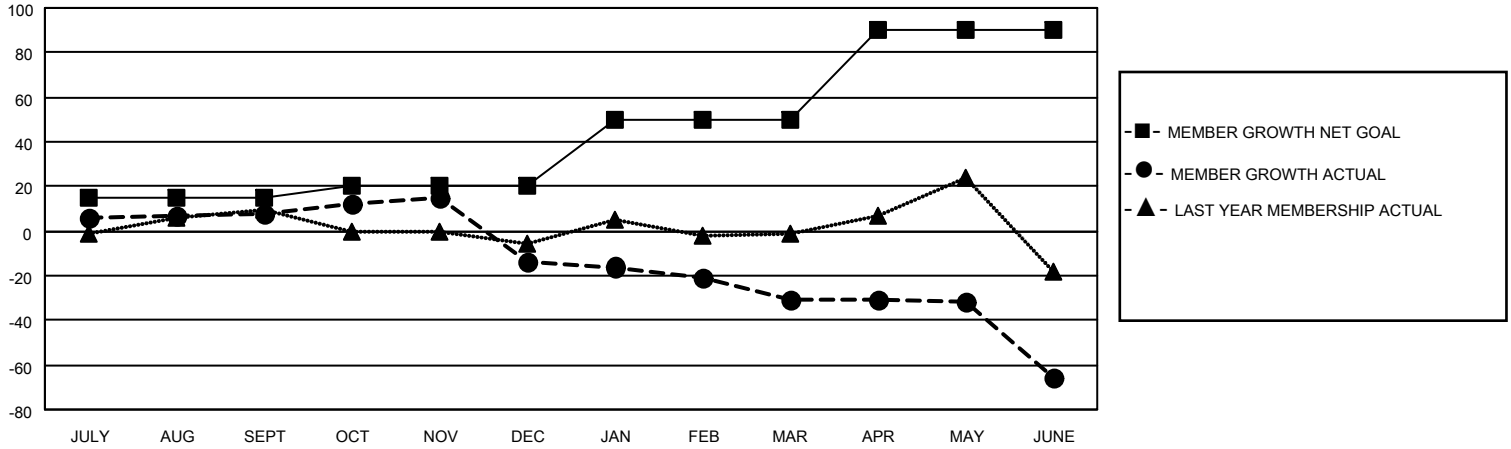
| Clubs | | | |
|-----------------------|---------------|-----------|---------------|
| RESULTS FOR 2022-2023 | | | |
| QUARTER | NEW CLUB GOAL | NEW CLUBS | DROPPED CLUBS |
| JULY/AUG/SEPT | 0 | 0 | 0 |
| OCT/NOV/DEC | 1 | 0 | 1 |
| JAN/FEB/MAR | 0 | 0 | 0 |
| APR/MAY/JUNE | 1 | 0 | 0 |

| Members | | | |
|-----------------------|------------------------|----------------------|---|
| RESULTS FOR 2022-2023 | | | |
| QUARTER | MEMBER GROWTH NET GOAL | MEMBER GROWTH ACTUAL | DROPPED MEMBERS ACTUAL (including transfers) |
| JULY/AUG/SEPT | 15 | 25 | 11 |
| OCT/NOV/DEC | 5 | 23 | 42 |
| JAN/FEB/MAR | 30 | 24 | 30 |
| APR/MAY/JUNE | 40 | 34 | 67 |

GOALS AND ACTUAL NEW CLUBS CUMULATIVE



GOALS AND ACTUAL MEMBERS CUMULATIVE



DROPPED CLUBS: 1

22 CLUBS OF 37 ADDED 1 OR MORE NEW MEMBERS

GENDER DISTRIBUTION

| | |
|----------------------|--------------|
| MALE | 706 (68.68%) |
| FEMALE | 322 (31.32%) |
| NON BINARY | 0 (0.00%) |
| PREFER NOT TO ANSWER | 0 (0.00%) |

DROPPED MEMBERS

[CLICK HERE FOR CUMULATIVE MEMBERSHIP DATA](#)

| | |
|----------------|------------|
| DECEASED | 18 |
| CLUB CANCELLED | 7 |
| OTHER | 125 |
| TOTAL | 150 |

TOTAL FAMILY UNIT MEMBERS 219

FAMILY MEMBERS PAYING HALF DUES 112